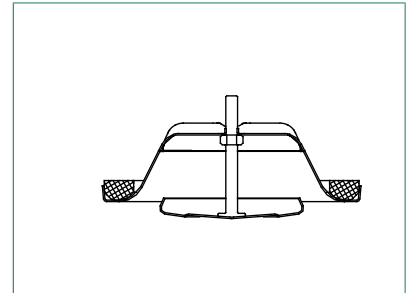
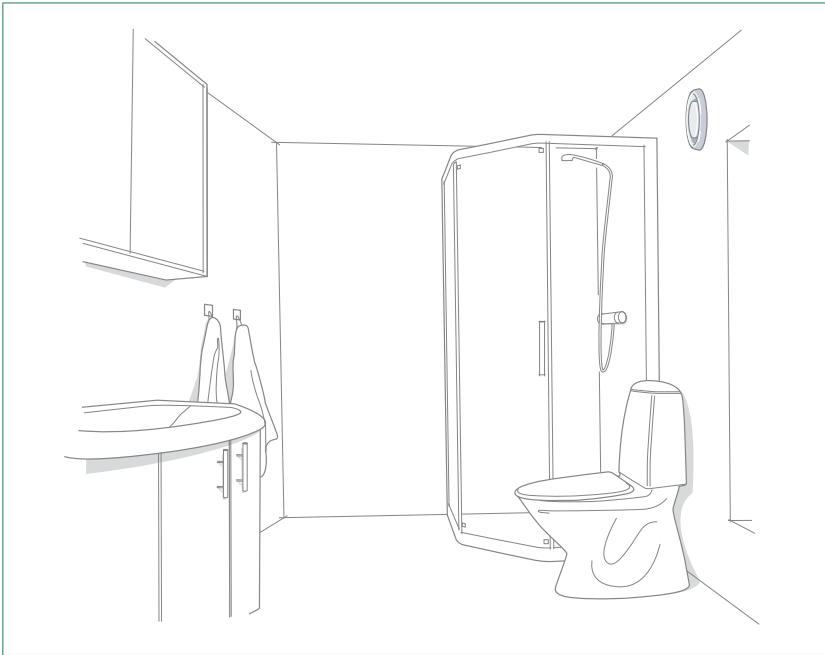


## NK Exhaust valve



NK exhaust valve is intended for installation in the ceiling. The valve is suitable for offices, houses, etc.

### Quick Selection

Valve Size	Air flow range l/s at sound level		
	25 dB	30 dB	35 dB
NK-80-C	18	22	26
NK-100-C	31	37	44
NK-125-C	42	52	62
NK-150-C	50	61	78
NK-160-C	70	87	110
NK-200-C	130	150	180

### Specifications

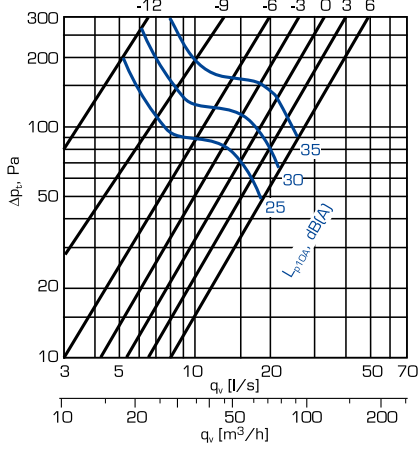
- CleanVent coating as standard
- Manufactured from steel sheet.
- Six sizes.

### Product code example

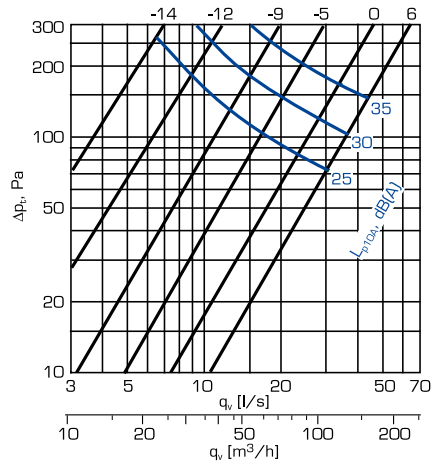
Exhaust valve NK-100-C

Mounting ring KKT-100

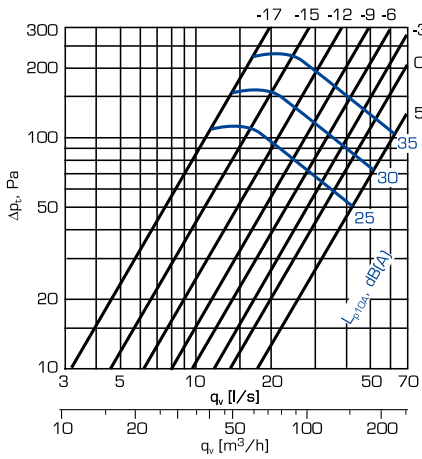
**Air flow, pressure drop, sound level**  
NK-80-C



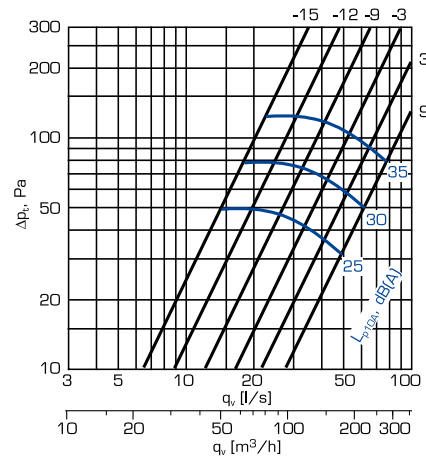
NK-100-C



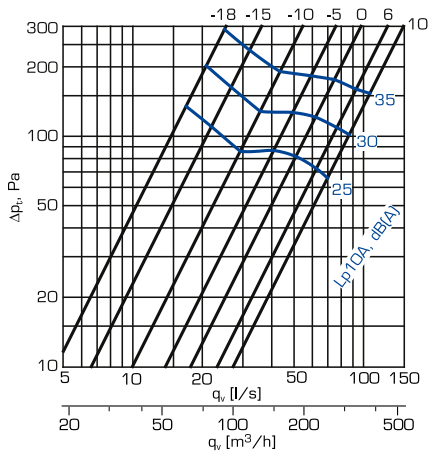
NK-125-C



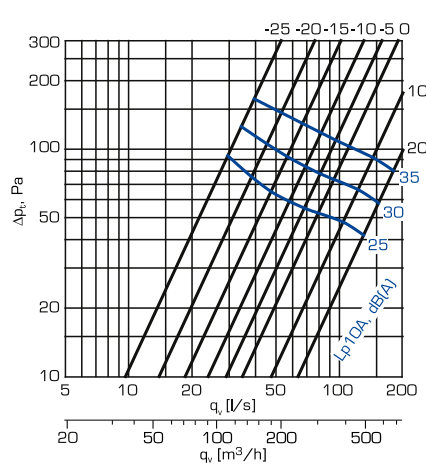
NK-150-C



NK-160-C



NK-200-C



## Sound power level $L_w$

NK	Correction of sound level in dB at octave bands, middle frequency, Hz						
	125	250	500	1000	2000	4000	8000
80	2	-5	-5	-4	1	-10	-20
100	-4	-1	-2	-2	0	-8	-17
125	-7	0	-2	-3	1	-12	-21
150	-3	-3	-7	2	-3	-17	-29
160	-3	0	-2	1	-2	-14	-27
200	-3	-2	-3	2	-5	-14	-23
Tol. +/-	3	2	2	2	2	2	3

Sound power levels by octave bands are obtained by adding to total sound pressure level  $L_{p10A}$ , dB(A) the corrections  $K_{oct}$  presented in the table according to the following formula:

$$L_{w_{oct}} = L_{p10A} + K_{oct}$$

Correction  $K_{oct}$  is average value in range of use of NK unit.

## Sound attenuation $\Delta L$

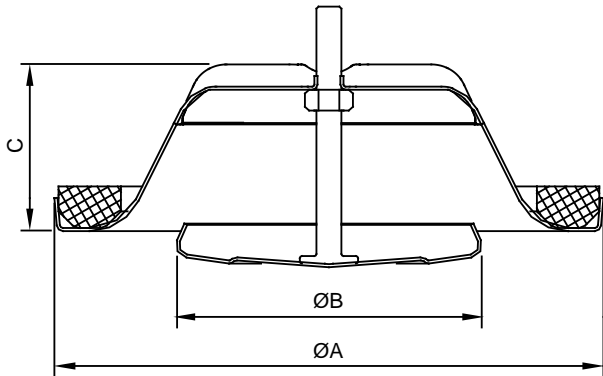
NK	Slot s (mm)	Sound attenuation in dB at octave bands, middle frequency, Hz							
		63	125	250	500	1000	2000	4000	8000
80	-12	26	23	17	12	10	10	8	12
	-3	24	19	14	9	7	6	6	10
	3	24	19	13	8	6	5	4	9
100	-12	21	18	12	14	12	11	12	15
	-5	21	16	9	11	9	8	8	12
	5	21	16	8	10	8	7	5	11
125	-17	22	16	11	9	7	7	9	12
	-9	21	16	9	8	5	5	7	8
	5	20	15	9	6	4	3	4	7
150	-15	19	14	9	8	6	7	9	10
	-5	19	13	9	6	5	4	6	8
	5	18	13	8	5	4	3	6	6
160	-15	19	14	9	8	6	7	9	10
	-5	19	19	9	6	5	4	6	8
	5	18	13	8	5	4	3	6	6
200	-25	17	12	10	9	9	12	14	12
	0	16	10	7	6	6	6	10	7
	20	16	10	6	4	4	5	9	6
Tol. ±		6	3	2	2	2	2	2	3

The average sound attenuation  $\Delta L$  from duct to room including the end reflection of the connecting duct in ceiling installation, is obtained in the table above.

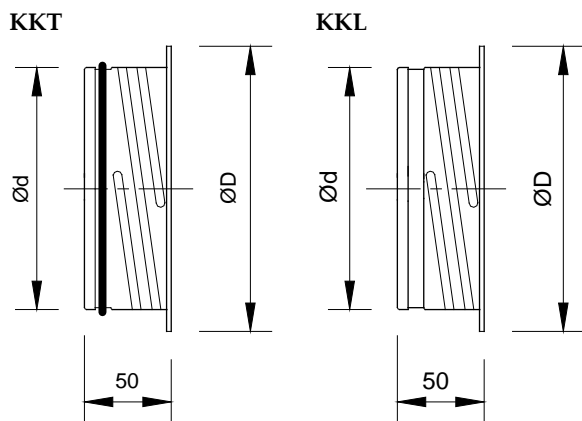
## Definitions

$q_v$	air volume	l/s, m <sup>3</sup> /h
$\Delta p_t$	total pressure drop	Pa
$L_{p10A}$	sound pressure level with 4 dB room attenuation (10 m <sup>2</sup> sab)	dB(A)
$L_{w_{oct}}$	sound power level by octave bands	dB
$\Delta L$	sound attenuation	dB
$L_{oct}$	correction	dB

## Dimensions and weight



Size	A [mm]	B [mm]	C [mm]	Weight [kg]
80	112	60	37	0.12
100	132	75	40	0.16
125	163	99	46	0.23
150	193	119	54	0.34
160	193	119	54	0.34
200	245	157	64	0.51



Size	Pack size	Ød [mm]	ØD [mm]	Weight KKT [g]	Weight KKL [g]
80	60	79	101	66	63
100	56	99	122	75	71
125	36	124	148	102	97
150	24	149	175	123	116
160	25	159	184	131	125
200	12	199	225	165	156

## General

### Construction

The NK is manufactured from steel sheet and painted in white (RAL 9010). Other colours are available to special order. CleanVent coating as standard.

Valve body has a gasket made of cellular plastic and the control disc with screw spindle enables easy regulation and positional locking.

Mounting rings KKT and KKL are manufactured from galvanized steel sheet. KKT is equipped with rubber sealing gasket.

### Installation

Mounting ring KKT or KKL is fitted into the duct with screws or rivets. The valve is fixed by "a screwing action" to locate the valve lugs into indents in the mounting ring.

### Measurement and regulation of air flow

Regulation of air flow is achieved by turning the control disc to change adjustment dimension s (mm).

The measurement of air flow is made by a pressure difference measurement with a separate measuring tube.

Refer to separate air flow measurement diagrams for information.

### Descriptive text

NK Exhaust valve manufactured by FläktGroup.

## Product code

Exhaust valve  
Exhaust valve with springs

Size (aaa)  
080, 100, 125, 150, 160, 200  
Surface finish (b)  
C = Standard CleanVent coating  
E = Special colour

NK-aaa-b  
NKJ-aaa-b

## Accessories and spare parts

### Accessories

Mounting ring with rubber gasket KKT-aaa  
Mounting ring without rubber gasket KKL-aaa

Size (aaa)  
080, 100, 125, 150, 160, 200

### Spare parts

Seal COGZ-aaa-3

Size (aaa)  
080, 100, 125, 150, 160, 200